

The FACE it revision model MFL

1.

LEARNT THE FACTS



- Knowledge Organiser
- GCSE Vocab list
- Conversation Questions
- Textivate
- Walk Thrus on TEAMS

2.

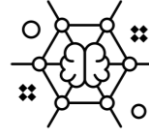
APPLY IN CONTEXT



- AQA Practise Topic based Reading and listening questions on TEAMS.
- Seneca – topic based practise

3.

CONNECT IDEAS



- Speaking – Role Plays and Picture cards
- Reading and Listening past questions
- Writing – practise questions

4.

TEST IN EXAM CONDITIONS



- Exam papers in timed conditions.

FACE it revision model

Students should use FACE it, to support their revision planning and as a diagnostic tool:

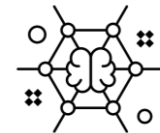
Have you learned your **F**ACTs?



Have you practised **A**pplying your knowledge in context questions?



Have you started to **C**onnect ideas with more synoptic questions?



Have you tested yourself in timed **E**xam conditions?

