



AGS Weekly

Allerton Grange School Weekly Newsletter

Wishing a Happy New Year to all of the Jewish members of the Allerton Grange School community.

It's been another busy week in school, with students taking part in Road Safety Assemblies and KS4/5 students attending the Annual Careers Fair.

Black History Month

October is Black History Month (BHM) and this year the theme is Reclaiming Narratives. Students are invited to take part in activities including:

- **Have Your Say** at our BHM stall next to the Cyber Cafe on Tuesdays during breaktimes.
- Take part in the **BHM Essay Competition** on the topic of 'What does Black History Month mean to you?'
- **Attend the BHM Lecture Series** on Thursdays, 3.15 - 4.00 pm in L024.



ClassCharts

As you should be aware, we use ClassCharts to keep parents and carers informed about their child and provide instant information about attendance, homework, achievements and any sanctions. If you are having any problems using ClassCharts, please get in touch and we will help you get set up.

Extra-Curricular Activities

There has been a small update to the Extra-Curricular Activities Calendar. It is on the school website and you can click on the image below to open the calendar:

Extra-Curricular Activities Calendar				
Term 1 – September to December				
Monday	Tuesday	Wednesday	Thursday	Friday
Year 6 Basketball Year 6 Netball Year 6 Football Year 6 Table Tennis Year 6 Chess	Year 5 & 6 Football Year 5 & 6 Netball Year 5 & 6 Basketball Year 5 & 6 Table Tennis Year 5 & 6 Chess	Year 4 & 5 Football Year 4 & 5 Netball Year 4 & 5 Basketball Year 4 & 5 Table Tennis Year 4 & 5 Chess	Year 3 & 4 Football Year 3 & 4 Netball Year 3 & 4 Basketball Year 3 & 4 Table Tennis Year 3 & 4 Chess	Year 2 & 3 Football Year 2 & 3 Netball Year 2 & 3 Basketball Year 2 & 3 Table Tennis Year 2 & 3 Chess
				Year 1 Football Year 1 Netball Year 1 Basketball Year 1 Table Tennis Year 1 Chess
				Year 0 Football Year 0 Netball Year 0 Basketball Year 0 Table Tennis Year 0 Chess
				Year -1 Football Year -1 Netball Year -1 Basketball Year -1 Table Tennis Year -1 Chess
				Year -2 Football Year -2 Netball Year -2 Basketball Year -2 Table Tennis Year -2 Chess
				Year -3 Football Year -3 Netball Year -3 Basketball Year -3 Table Tennis Year -3 Chess
				Year -4 Football Year -4 Netball Year -4 Basketball Year -4 Table Tennis Year -4 Chess
				Year -5 Football Year -5 Netball Year -5 Basketball Year -5 Table Tennis Year -5 Chess
				Year -6 Football Year -6 Netball Year -6 Basketball Year -6 Table Tennis Year -6 Chess
				Year -7 Football Year -7 Netball Year -7 Basketball Year -7 Table Tennis Year -7 Chess
				Year -8 Football Year -8 Netball Year -8 Basketball Year -8 Table Tennis Year -8 Chess
				Year -9 Football Year -9 Netball Year -9 Basketball Year -9 Table Tennis Year -9 Chess
				Year -10 Football Year -10 Netball Year -10 Basketball Year -10 Table Tennis Year -10 Chess
				Year -11 Football Year -11 Netball Year -11 Basketball Year -11 Table Tennis Year -11 Chess
				Year -12 Football Year -12 Netball Year -12 Basketball Year -12 Table Tennis Year -12 Chess

Andy Norrington (Associate Headteacher)
Mike Roper (Headteacher)

Dates for your Diary:

Thursday 10 October - Year 11 Supporting Success Evening, 6.00 - 7.00 pm

Thursday 24 October - KS4/5 Concert, 7.00 - 9.00 pm

Friday 25 October - Culture Day

Monday 28 October to Friday 1 November - Half Term Holiday

Monday 4 November - School reopens

Thursday 7 November - Sixth Form Open Evening, 6.00 - 8.00 pm

Thursday 24 November - KS4&5 Concert, 7.00 - 9.00 pm
Tickets will be available on ParentPay

Friday 25 November - Culture Day

Thursday 12 December - World of Music Concert
Tickets will be available on ParentPay

Parent/Carer SEND Workshops:

~ Parent/Carer SEND Workshop ~

What is a Parent/Carer SEND Workshop?

It is a **free** session for parents/carers of children and young people aged 4 to 11 with additional support needs.

The workshop aims to help adults start to explore and understand 'sensory differences' or 'sensory processing difficulties' how this can affect your own and your child's physical and emotional regulation.

The Parent/Carer SEND workshop is delivered by Juniper Tree Therapy, on behalf of LCC SILC Cluster.

Who is the workshop for?

- ✓ Parents/carers of children who **do not** have an Education Healthcare Plan (EHCp).
- ✓ Parent/carers with children and young people with Autism Spectrum Disorder, Attention Deficit Hyperactivity disorder, Dyspraxia, Developmental Coordination Disorder, Learning Difficulties or Learning Disabilities.
- ✓ A formal diagnosis is not required.

Where and when? Please choose one of the workshops below

Thursday 26th September 2024 Leeds City Museum Millennium Square, LS2 8BH	Monday 21st October 2024 Shine Harehills Rd, Harehills LS8 5HS	Friday 22nd November 2024 Hillside Beeston Rd, Holbeck LS11 8ND	Monday 9th December 2024 The Vinery Centre Vinery Terrace LS9 9JU
--	---	--	--

10am to 2pm – Lunch & Refreshments Provided

To book a place email: families.first@leeds.gov.uk

For more information call Send Navigation Team : 07891273893

Training Days 2024-25

The Training Days this school year, when school is closed to students, are on:

Monday 2 September 2024

Friday 20 September 2024

Monday 6 January 2025

Monday 21 July 2025

Tuesday 22 July 2025

Ongoing issue with Yahoo (including AOL and Rocketmail) email addresses

This is a reminder that there is an ongoing problem which means we are unable to send emails to Yahoo, AOL and Rocketmail email addresses.

This is an external problem and not something we can correct within school.

If you have a Yahoo, AOL or Rocketmail email address, please create a new one with another provider and update us with your contact information to ensure you are receiving all communications from us.
Thank you for your support.

Drama and Music Performances:

Family, friends and members of the school community are warmly invited to support our Year 11 Drama students and KS4 & 5 Musicians at their upcoming performances.

Y11 Drama proudly presents
2 new original pieces of theatre

'The Murder at Woods Manor'
and
'The Failed'

Tuesday 22nd October
6pm
Main school hall

**KEY STAGE 4 & 5
CONCERT**

Thurs 24 October
7:00-9:00 pm

Tickets: £3 available on ParentPay

Sports Results

Football

On Tuesday, the **Year 10 boys' Football team** had their first win of the season, beating Brigshaw 4-3.



Netball

Both our **Year 8 and Year 9 Netball teams** played on Wednesday 2 October; Year 8 at home and Year 9 away against Leeds City Academy.

The **Year 8** teams beat Wetherby 10-5 and 17-0 and **Year 9** won 12-2 and 12-0 against Leeds City.

Thank you to the PE Team for supporting our students to take part in competitive sport.

Understanding Young People's Travel Patterns

We've been asked by the West Yorkshire Combined Authority to share the following with our families:

The West Yorkshire Combined Authority are really interested to hear the thoughts of young people (13-19) and parents, carers and guardians of young people up to the age of 19, on all things bus and active travel. We're keen to better understand travel patterns, as well as how and why you make specific travel choices for education, work and leisure. Over the next twelve months we will be running a number of customer insight surveys and workshops covering many areas of bus travel as well as walking and cycling.

The survey should take no longer than a few minutes to complete, depending on your answers. Responses are anonymous but if you would like more information on how West Yorkshire Combined Authority process personal data, [click here to view the privacy notice](#). Your views matter and will continue to feed into how we shape our services and customer offers here in West Yorkshire. Thank you for your time, [link to the survey Here](#)

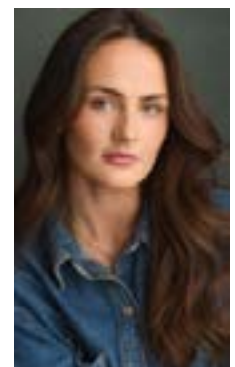
KS4/5 Careers Fair

On Thursday 4 October, KS4 and KS5 students attended the annual Allerton Grange Careers Fair. There were exhibitors from a range of different organisations, industries, universities and colleges.



Alumni News

Former Allerton Grange School student, Gabrielle Cummins, is currently touring the UK in Ghost the Musical.



Dropping off and collecting students at the end of the day

If you are dropping off or collecting children by car at the beginning and end of the day, please be considerate to pedestrians and other road users.

The Talbot Avenue entrance is a pedestrian entrance for students and is very busy before and after school.

We are concerned that there will be a serious accident, due to dangerous driving and parking, and ask parents and carers to be more careful.

Please do not stop outside school on Talbot Avenue to drop off or pick up children. This poses a risk to both drivers and pedestrians.

The Turning Circle, accessible from Lidgett Lane, is there for parents and carers to drop off and pick up children.

Alternatively, you can arrange to collect children from nearby streets.

Students will be reminded in school about road safety, and the importance of checking for traffic before crossing a road. Please talk to your children about road safety, particularly if they are walking to school by themselves for the first time.

The safety of our students is our priority, and we must ensure they are able to always enter and exit the school site safely.

Thank you for your understanding and support.



Access to the School Site

Morning:

Talbot Avenue - The gates open at 8.10 am and close at 8.40 am. Students arriving late will need to press the Student button at the gate to be let through to the Student Entrance/ Attendance Office.

Lidgett Lane - The gates will open at 8.15 am and close at 8.25 am. Students arriving late will need to enter school via Talbot Avenue. All cars must leave the Turning Circle area by 8.25 am.

Afternoon:

Talbot Avenue - The gates open at 3.00 pm and close at 3.30 pm.

Lidgett Lane - The gates to the Turning Circle open at 2.40 pm and will be locked at 3.30 pm. All cars must leave this area by 3.30 pm, when the gates will be locked.

Students staying in school for after school activities will be supervised by staff and taken to the gate to leave safely via Talbot Avenue.

Don't start your day by being late to school!
Students need to be in school, in their form room, at 8.25 am
ready for the register to be taken at 8.30 am.

SCHOOL DAY 2024-25

Timetable A Years 10/11/12/13		Timetable B Years 8/9		Timetable C Year 7	
8:25am		Warning Bell		8:25am	
8:30am	REGISTRATION				8:30am
8:50am	DEAR	DEAR		DEAR	8:50am
9:15am	1	1		1	9:15am
10:05am	2	BREAK	10:05am	2	10:05am
10:55am	BREAK	2		BREAK	10:30am
11:15am	3	3		3	10:50am
12:05pm	4	LUNCH	12:05pm	4	11:15am
12:55pm	LUNCH	4	12:30pm	LUNCH	12:05pm
1:20pm	5	5		5	12:30pm
2:10pm	6	6		6	12:55pm
3:00pm					1:20pm
	After School Provisions/Detentions begin				
					2:10pm
					3:00pm

September:
 Year 7 start break 5 minutes early at 10.25 am to aid with their transition

All students should leave the school site by 3.10pm unless attending a session 7 or working with a member of staff. There is to be no waiting in the cafe after school. The only students in the building must be involved in Enrichment sessions, a session 7, or isolation/detention.