



Allerton Grange Careers

*where will your next steps
take you?*

Year 11 Post 16 Options Guide

COLLEGE

T LEVELS

SIXTH FORM

WORK AND STUDY

APPRENTICESHIPS

WHAT ARE THE ALTERNATIVES?

Plus information and advice about what to
do if you are not/your child is not in
education, employment or training after
Year 11

WHAT CAN I DO WHEN I FINISH MY GCSE'S?

In England, the government instructs that:

You can leave school on the last Friday in June if you'll be 16 by the end of the summer holidays.


You must then do one of the following until you're 18:

- stay in full-time education, for example at a college or 6th Form
- start an apprenticeship
- spend 20 hours or more a week working or volunteering, while in part-time education or training

In England, you have 3 years Post-16 funded education from the government, unless:

- You have an Educational Health and Care Plan. In this case, you have up to the age of 25.
- You are a year older than your current year group. In this case, free education applied until you are 19, so you will have 2 years of government funding when you finish your GCSEs.

**WHAT DOES THAT
MEAN?**



If you start a course/college, but don't think it's right for you, you can apply to start again somewhere else or on a different course the following September and you'll still have 2 years to gain a full qualification (if you will be 19 or under when you finish).

**Full-time
studies**

VOCATIONAL QUALIFICATIONS

Vocational courses are work related courses that allow you to develop the skills and knowledge required by a specific job or area. Some examples of vocational courses include BTEC's and Cambridge Nationals.

Vocational courses exist in hundreds of areas, below are just a few examples.

Barbering, E Sports, Cabin Crew, Animal Studies, Plumbing
Fashion and Textiles, Cyber Security, Childcare and Education,

Many universities now accept Level 3 vocational qualifications, but it's important to check when applying to college, if you are hoping to complete a degree after finishing college.

There are vocational courses at all levels, so they are available to anyone who leaves school, whatever your grades.

The entry requirements for vocational qualifications are different for every course at every level, so you'll need to check the college website, or speak to someone at the college to check what the entry requirements are for the course you hope to study.

A LEVELS

A Levels are the most academic qualification you can study after GCSEs. They are similar to GCSE's in learning and assessment style, but with more academically challenging content. They are intended for students moving onto University or degree apprenticeships.

You must choose 3 A Levels to study at 6th Form College. You can choose subjects you have already studied, or new ones such as Law, Economics, Sociology, Politics and many others.

A Levels are graded from A* to U. Universities and degree apprenticeships will either ask for specific A Levels grades OR UCAS points in order to be offered a place. →

A Levels are taught and assessed in the same way GCSEs are. If you've enjoyed your GCSE studies and you're ready for a challenging step up, A Levels are right for you.

The entry requirements to study A Levels are a minimum of 5 GCSE's at grade 4 and above (although many subjects require a grade 5 or 6)

T LEVELS

T Levels are work related courses that offer a mix of academic learning and exams with a 40 day work experience placement and a work related project. As with vocational courses, you choose 1 work related area to study.

T Level subjects include:

- Legal, finance & accounting
- Creative and Design
- Agriculture, environment and animal care
- Engineering & Manufacturing
- Education and Early Years
- Digital & IT
- Health & Science

T Levels are graded Pass, Merit, Distinction and Distinction*. These grades are worth UCAS points for university applications.

You can study at university after completing T Levels BUT you should check the universities and courses you are interested in, to make sure they accept T Levels as not all will.

The entry requirements to study T Levels are usually 5 GCSE's at grade 5 or above.

Local Colleges

Please find a number of local colleges that our students move onto below. You may have others in mind, or be looking for something more specific (e.g. music or drama school), in this case, please let Mrs Mills know and we can support your child with their aspirations.

Allerton Grange 6th Form

Elliott Hudson College

Leeds City College

Notre Dame College

Leeds Arts University

Leeds College of Building

Army Foundation College, Harrogate

Askham Bryan College, York

UTC Leeds (specialises in engineering)

CAPA College (performing arts), Wakefield

Roundhay 6th Form, Allerton High 6th Form

Apprenticeships

**(For more information, please see
the Ultimate Apprenticeships
Guide, available on the Allerton
Grange Website)**

APPRENTICESHIPS

As an apprentice, you are employed by an employer. You are paid by your employer to complete work for them (80% of your time) and complete your training (20% of your time).

Apprenticeships are available at Level 2 (Intermediate) or Level 3 (Advanced) when you finish your GCSEs (depending on your GCSE grades and on the type of apprenticeship).

Apprenticeships are advertised and applied for like jobs, NOT like college or university. You can find them on the government website, or on well-known job search sites.

Apprenticeships are often very competitive and lots of people apply for only one or two places. It takes time and a lot of hard work to get an apprenticeship.

To apply for an apprenticeship, most employers want a CV and for you to complete a paper or online application form. You'll then complete an interview and possibly some tests.

Work and Study

WORK AND STUDY

If you've had enough of full time education, but you're struggling to secure an apprenticeship, you can get a job BUT you must complete training/qualifications alongside your job.

You can be self employed or be employed by someone else.

You'll need a National Insurance Number in order to work and, if you earn enough money, you'll start to pay tax and National Insurance

Job hunting takes time and patience! You'll need to keep your CV updated with your exam results, work experience and volunteering.

Be proactive to be employer attractive!

Take a copy of your CV into shops, restaurants, companies and organisations as well as looking and applying online. Employers will appreciate your proactivity and meeting you in person.

Places to do your part-time study.

**These are also places that
offer places for those aged 16+
without a college place or
apprenticeship.**

LEEDS CITY COLLEGE

SOMEWVILLE HOUSE

Leeds City College Somerville House Campus offers Level 1 courses in...

- **Personal and social Development** (learn skills to get a job, upskill in English and Maths, complete a project of your choosing and much more).
- **Creative craft** (demonstrate the skills to assist with furniture upcycling in a sustainable way, whilst working in a state-of-the-art workshop that mirrors a real-life workplace)

and Level 2 courses in

- **Employability and Enterprise** (Whether you want to go on to further study or gain employment, you will expand your enterprise and employability skills to help you take those next steps. This varied course emphasises personal development through valuable volunteer opportunities and experience of working on events and projects. You will gain a recognised qualification and progression support.)
- **Creative craft** (learners plan and prepare the tools, materials and equipment required to repurpose their final furniture item whilst maintaining a safe working environment. This will ensure that you gain practical experience, alongside enterprise and employability skills to prepare you for your next steps)

LEEDS CITY COUNCIL EMPLOYMENT AND SKILLS SERVICE



The apprenticeships hub gives free and impartial advice on apprenticeships.

Leeds Apprenticeships Recruitment Fair takes place during National Apprenticeships Week each year at the First Direct Arena in Leeds.

The ASK Padlet is updated weekly with apprenticeships available across Yorkshire.

**ASK PADLET
QR CODE**



Employment Advisors are based in community centres and offer:

- Careers Advice and Guidance
- Opportunities to learn new skills
- CV and application tips
- Interview practice
- Access to local jobs and apprenticeships
- In-work support
- Information on self-employment
- Advice on benefits calculations and managing debt

STREET LEAGUE

Street league uses sport and education to help young people into work.

Street League offer a much more relaxed approach to education and look to support everyone in the way that best fits with their learning style. They also operate on a much smaller scales and only have a maximum of 12 people per venue with a minimum of 2 staff on at all times.

Street League is a 15 week programme.

After the 15 weeks they hope to have progressed you onto another course, or found you employment. If not, they continue to work with you until you do find your next steps.

Incentives

- Free Nike & Steet League sports kit.**
- £100 in gift vouchers.**
- Travel reimbursed daily.**
- Chance to play both non-competitive and competitive football matches.**
- Bursary available. This covers travel and lunch on a daily basis.**

OWN YOUR FUTURE



**STREET
LEAGUE**



Nacro is a National Charity which has a provision in Meanwood, Leeds. They offer courses for students without any prior qualifications.



Our mission is simple – we want students to be who they want to be. At Nacro Education, we'll help them to realise their potential and to gain the skills, knowledge, and experience they need to progress confidently onto their next steps. This could be further education, training, or work.

With our Get Set! courses, we take a unique approach which enables students to learn in their own way and at their own pace. Focussing on certified vocational qualifications, enrichment, employability, maths and English, and work placement opportunities.

Our smaller class sizes, skilled and experienced tutors, practical workshops, and one to one support make us stand apart.

COURSES OFFERED...

**MOTOR VEHICLE
MAINTENANCE**

**MULTI-SKILLS
CONSTRUCTION**

**CATERING AND
HOSPITALITY**

CHILDCARE



- Founded in 1976 by King Charles to improve the lives of young people in the UK.
- The Prince's Trust supports people aged 11-30
- The Prince's Trust programmes help young people to build confidence, get jobs and start their own business.

Get Into Programme

This programme gives you the opportunity to work with top employers who are ready to hire fresh talent, while improving your CV and interview techniques. Some courses include a trial shift with a potential employer at the end.

Get Started Programme

This Programme covers everything from music, boxing, fashion and football and gives you a taste of an industry working directly with experts.

ENTERPRISE

This programme offers support for young people who want to explore self-employment with the interest of starting their own business.

FORGING FUTURES AT KIRKSTALL FORGE

The Forging Futures Campus is a pioneering skills centre based at Kirkstall Forge. The Campus provides trade and professional apprenticeships and employability skills training courses.

Their vision for the Forging Futures Campus is to help train Leeds' future architects, bricklayers, civil engineers, joiners, plumbers and electricians through apprenticeships and courses with hands-on work experience and mentoring support. Forging Futures Campus showcases a pool of talent in action, which has allowed businesses to be able to visit, monitor and select their apprentices.



**EMPOWER, EDUCATE
AND EMPLOY**

Designed differently, to change lives.



**For more info
and to sign-up
VISIT**

**FORGING-FUTURES-CAMPUS-BROCHURE FOR-SCREEN 30-JAN-
2020-2.PDF**



YMCA runs a study programme designed around you, to fit your interests and put you on course for your next career step. This could be aiming for an apprenticeship, studying at university or setting up your own business.

FITNESS TRAINING ACADEMY

YMCA also offers a 2 year programme, qualifying you as a Gym Instructor and Personal Trainer.,

OTHER COURSES ON OFFER AT YMCA

- Childcare**
- Employability skills**
- Pre-apprenticeships (to help you prepare for and find an apprenticeship)**



YMCA Leeds also works with the Yorkshire Amateur FC Academy to offer Level 2 and 3 qualifications in sport.



The Spear Programme is an award-winning programme that uses executive coaching skills to support NEET 16–24-year-olds who face barriers to successfully enter work or return to education.

**For more info
and to sign-up
VISIT**

We believe in the untapped talent and potential young people have, but recognise they often need support to reach that potential and overcome the barriers in their lives.

<https://resurgo.org.uk/programmes/leeds/>

Spear Foundation – Phase 1

- 6 week course made up of group and 1-1 coaching sessions
- Work-Ready skills – young people develop habits such as time keeping and skills such as confident communication and professional behaviour
- Work-Ready Mindsets – tackling the underlying attitudes or behaviours that are holding young people back. E.g. Resilience, Fixed/Growth mindset, Managing Conflict
- Work-Ready Resources – CVs, Cover Letters, application writing, interview techniques

Spear Career – Phase 2

- 1 year of follow up support to help a young person sustain their work or education outcome
- Weekly application workshops, ongoing 1-1 support and fortnightly phone calls
- 75% of young people that complete Spear get into work or education, and are still there a year later



Ready to sign up?

- 16 to 24 years old
- Not currently working or in education
- Able to commit to 4 sessions a week for 6 weeks

Sign up for the Spear Programme

Pre-apprenticeship Study Programme

- Supports people aged 16-8 (16-25 with an EHCP).
- 6 month programme with monthly intake of new students.

You will have the opportunity to complete English and Maths Functional Skills or GCSE, gain work experience in a sector of interest to you and obtain vital employability skills to help you progress onto an apprenticeship, employment or further education. This is a great opportunity to gain work experience in a sector of interest to you and obtain vital employability skills if you are unsure of your career path. Upon completion, you will gain an insight into work, gain quality work experience in a sector of your choice, have a quality CV and employer reference that will help you progress onto an apprenticeship, employment or further education.

Also offered at Juniper...

Traineeships - To support young people aged 16-18 (19-24 with EHCP). Duration from 9 weeks with monthly enrolments.

- Traineeships are predominantly work experience focused with an opportunity for you to undertake Maths and English qualifications up to GCSE level.

Apprenticeships - We partner with employers across various industries to offer apprenticeships, we tailor to meet the specific needs of each sector. Our Apprenticeships empower individuals to learn on the job, gaining valuable skills, knowledge, and industry-recognised qualifications.

Upon completion you will have gained:

- Level 1 or Level 2 BTEC Award or Certificate in WorkSkills
- Take part in mock interviews with real employers
- A quality CV
- Work experience in a sector of interest to you
- Maths & English (Where appropriate)
- Support with progression onto an apprenticeship, employment or further education

**For more info
and to sign-up
VISIT**

<https://www.junipertraining.co.uk/pre-apprenticeship-study-programme/>

**Other support
available**

LEEDS PATHWAYS

Leeds Pathways Support Team offers:

- * **Careers information, advice and guidance (IAG).**
 - **Post 16 applications (College, Sixth Forms, Training Providers, Apprenticeships).**
 - **One to one tailored support (signposting to services to address barriers to progression).**
 - **Support with creating a CV.**
 - **The Pathways team support NEET young people in years 12 and 13 and those in year 11 who are at risk of NEET. Referrals for year 11 students will be considered for young people where attempts by school to contact and engage young people on their post 16 options have been exhausted.**

How do we work with NEET young People



Young people are offered a face to face or telephone appointment



Locality drop ins and home visits available.



Sign up to support.



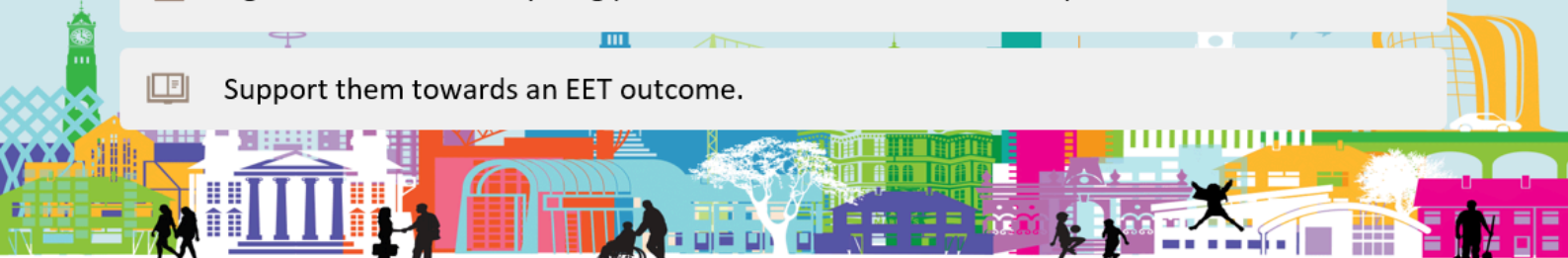
Complete Work Star IAG assessment tool to identify strengths and areas of interest



Agree actions with the young person and set these in the action plan.



Support them towards an EET outcome.



Resitting your GCSE's

Many students ask on results day (if they've not achieved the grades they need to progress onto college or their chosen course) whether they are able to resit their GCSE's.

If a student has not passed their English or Maths GCSE, this will usually be included on their timetable at college, or as part of their apprenticeship.

If students would like to choose to resit other GCSE's, they can do so at Leeds 6th Form College via the Step-Up Programme. This programme lasts for 1 year and allows students to resit 5 GCSE's the following summer. No other local college or 6th form offers this option. For more information, and to apply, see the Leeds 6th Form College website and search for Step-Up Programme.

**For further information or
support, please contact**

**Mrs Mills, Careers Lead
(louisemills@allertongrange.com)**

**Allerton Grange Admin
agadmin@allertongrange.com**